



BNP PARIBAS

Welkom bij het AGM seminar 2022

BNP Paribas, Amsterdam

30 juni 2022



Vereniging van Beleggers
voor Duurzame Ontwikkeling

Welkomstwoord

Geert Lippens, CEO BNP Paribas Nederland



Opening

Angelique Laskewitz, directeur VBDO



Programma

- **Welkomstwoord**, door Geert Lippens, CEO BNP Paribas Nederland;
- **Opening**, door Angelique Laskewitz, directeur VBDO;
- **Toelichting AVA-resultaten per ESG-thema**, door Hester Holtland, projectmanager VBDO;
- **Presentatie IUCN NL over biodiversiteit**, door Coenraad Krijger, directeur IUCN NL;
- **Presentatie Open ESG reporting**, door Paul Bureau, Head of Business Development Manaos;
- **Borrel** (duurzame borrel en hapjes)

AVA Engagement Seizoen 2022

Keep up: Getting ahead of legislation and pressure from civil society



Vereniging van Beleggers
voor Duurzame Ontwikkeling



Hester Holtland
Sr. Project Manager
VBDO



Keep up

Getting ahead of legislation and pressure from civil society



AGM Engagement Report 2022

Keep Up

Getting ahead of legislation and pressure from civil society



Engagement proces & resultaten

2022



Ons engagement proces

Impact of our engagement

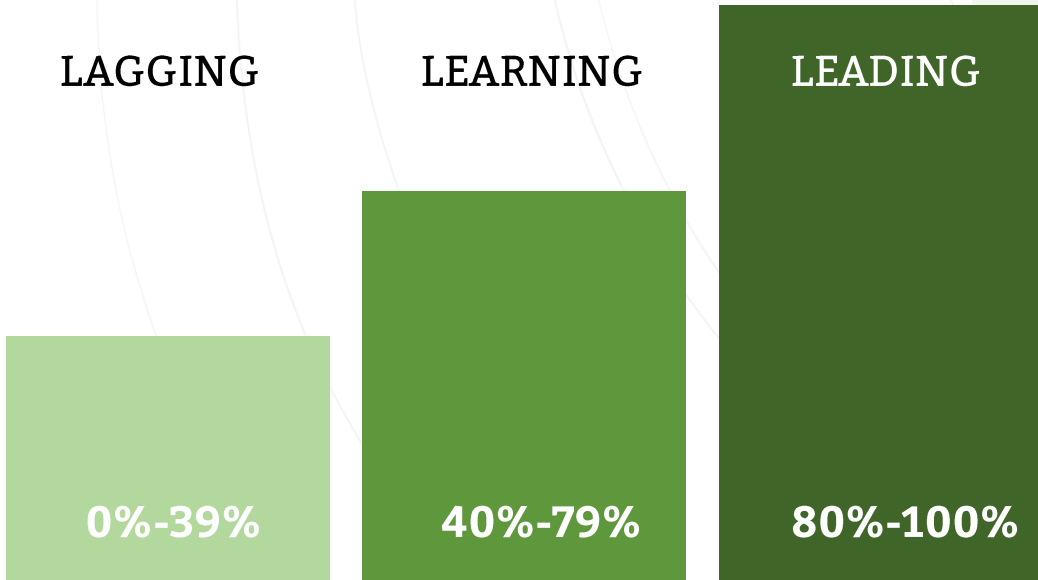
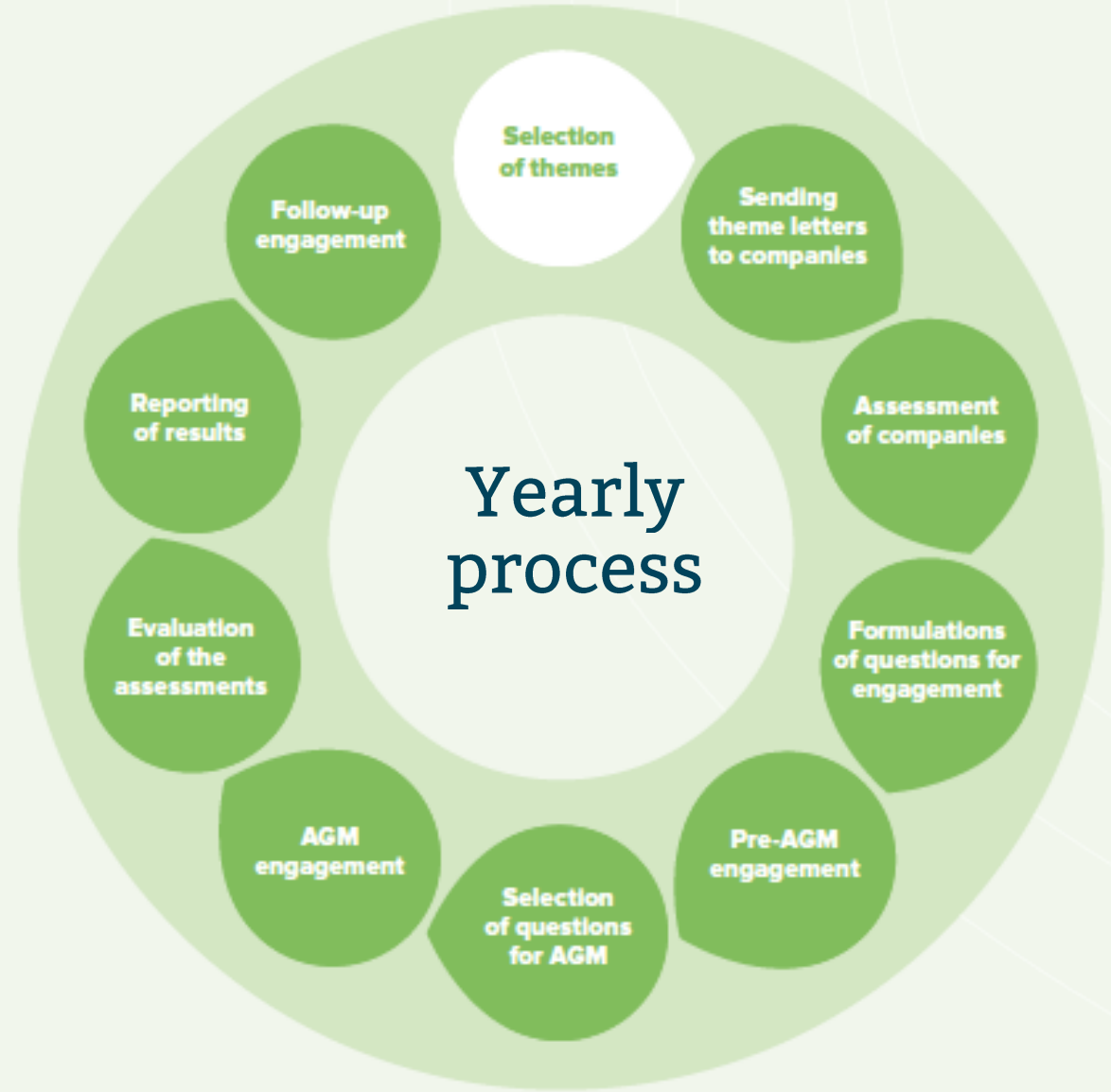
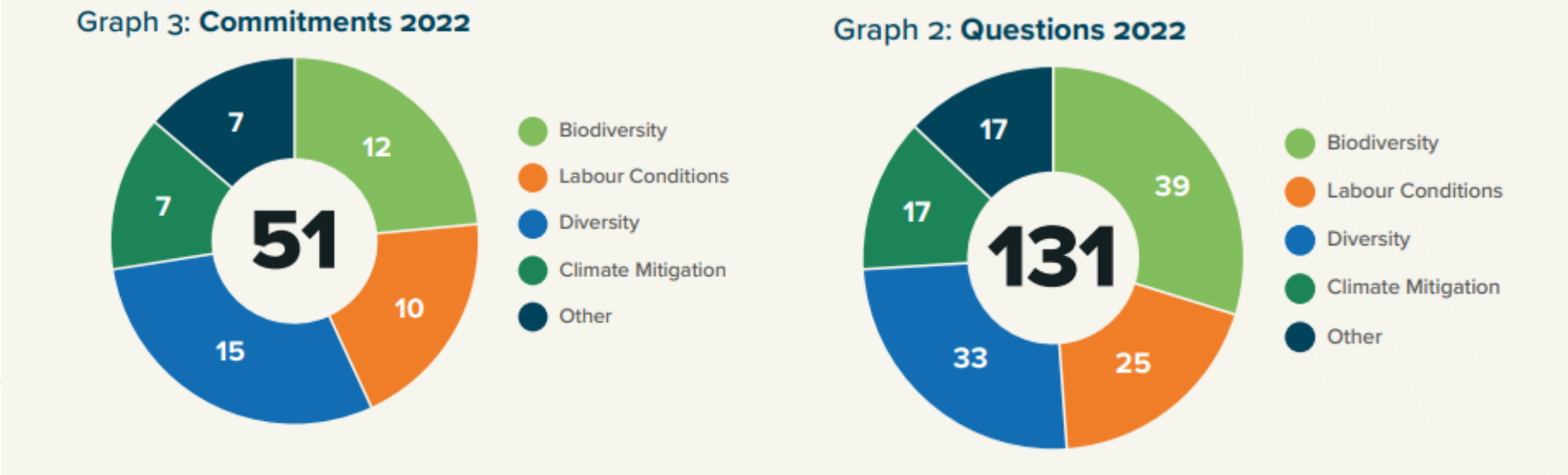


Figure 1: VBDO's engagement process



VBDO's 2022 AGM engagement seizoen in cijfers



Environmental – Biodiversiteit

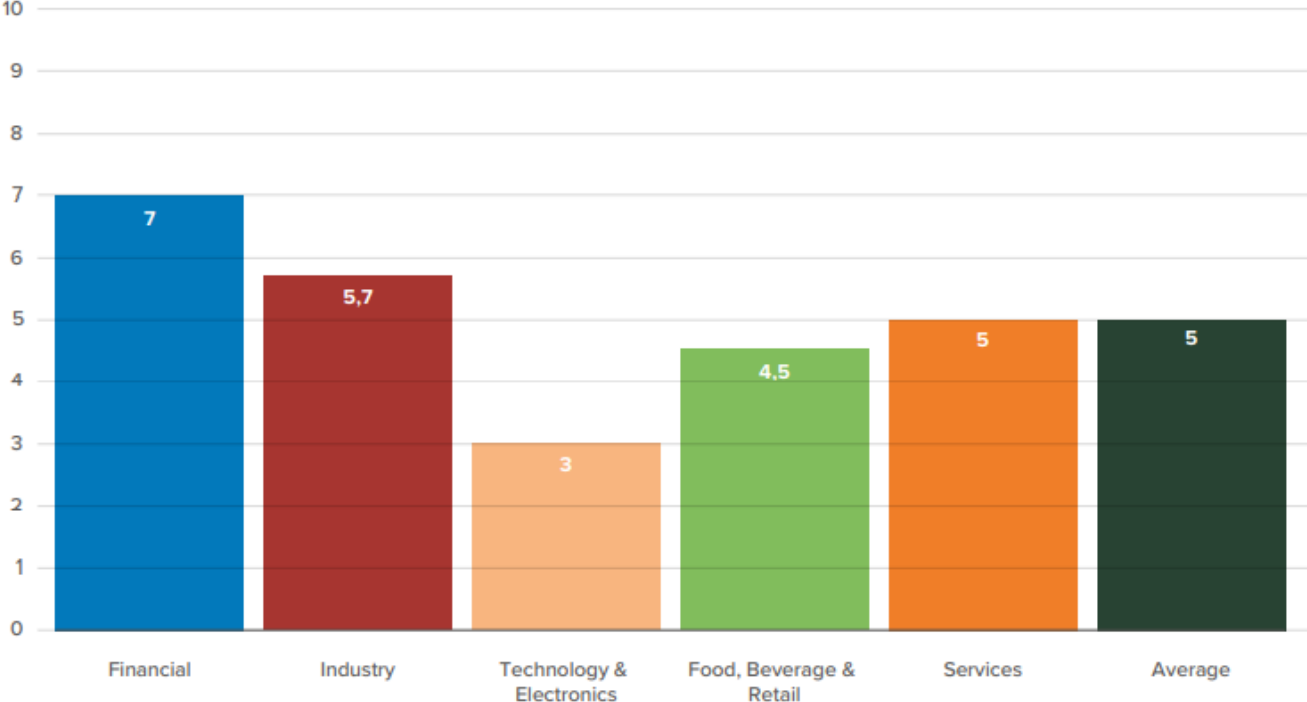


Biodiversity- impact of engagement

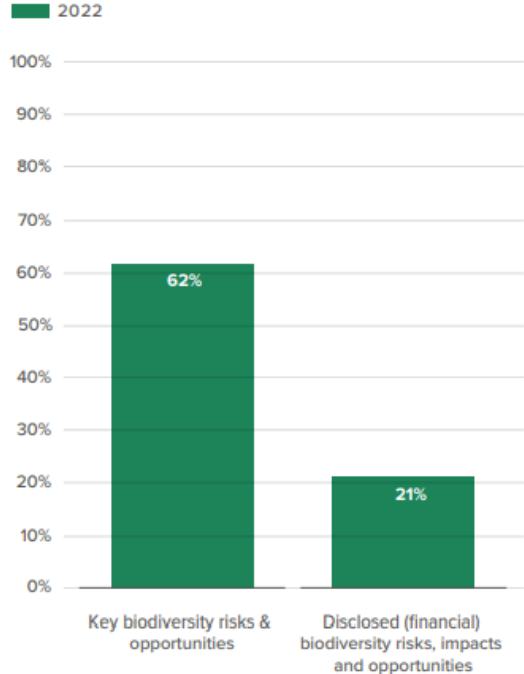


Biodiversiteit – eerste inzichten

Graph 7: Biodiversity - average score per sector



Graph 9: Percentages of companies performing biodiversity risk and impact assessments



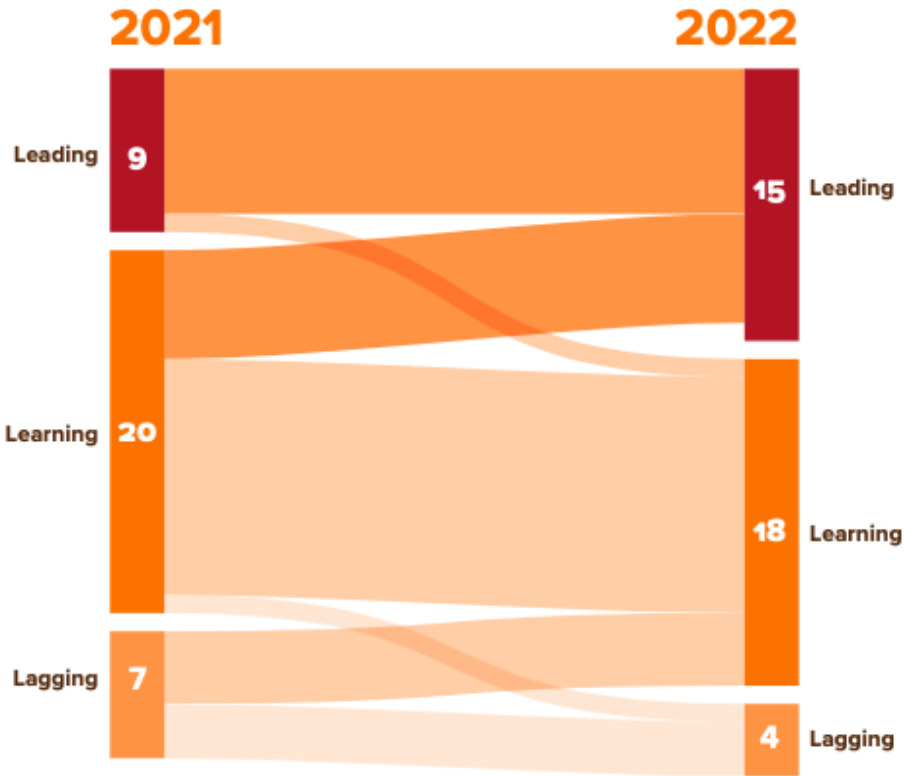
Social – Werkomstandigheden in de keten



Labour conditions - impact of engagement

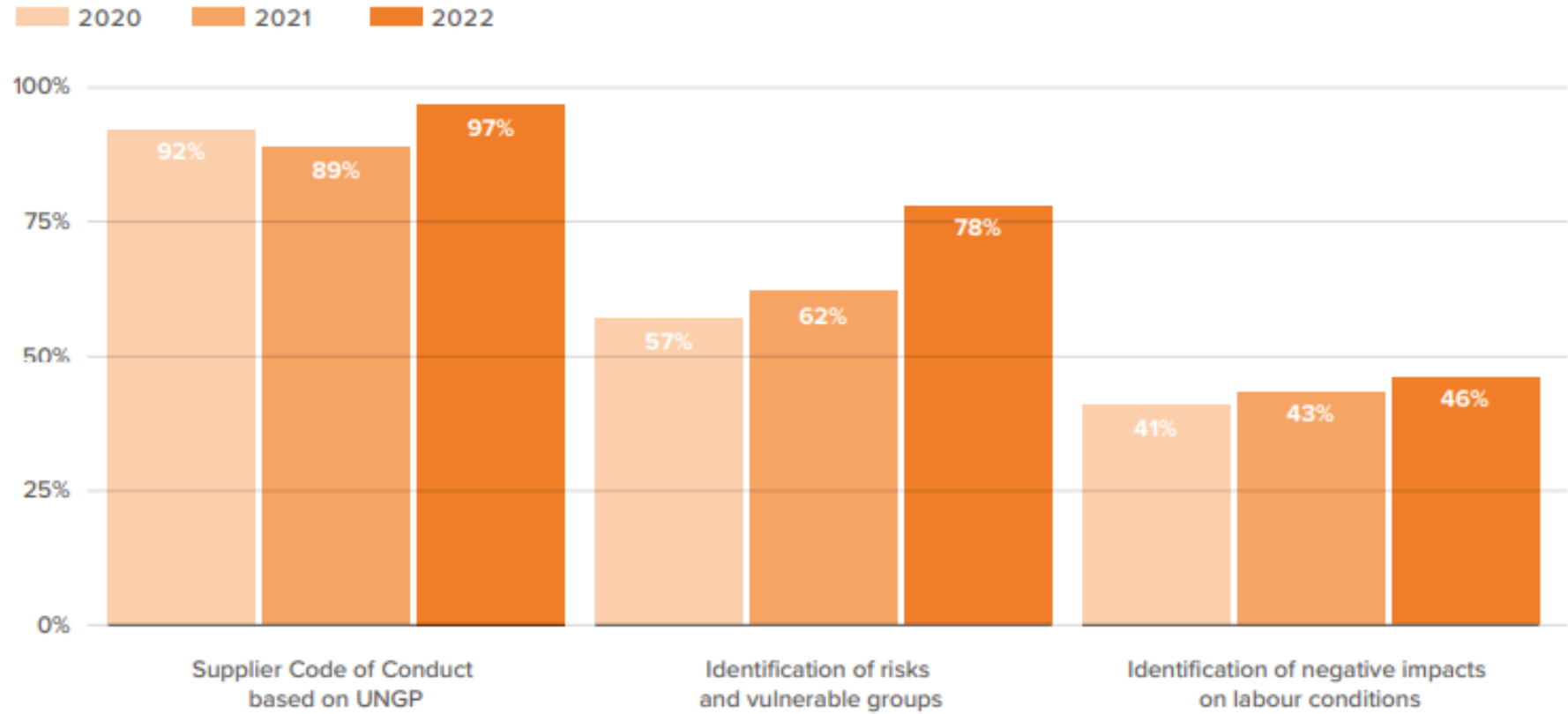
4.1 OVERVIEW OF ENGAGEMENT

LAGGING	LEARNING	LEADING
<p>Aalberts Adyen Wolters Kluwer Fugro</p>	<p>ABN Amro ING group Aegon Heijmans Royal BAM Group ArcelorMittal Boskalis Vopak ASML</p> <p>TKH Group ASM International Sligro Ahold-Delhaize Wereldhave Randstad PostNL Arcadis Takeaway.com</p>	<p>a.s.r. NN group Van Lanschot Kempen Corbion DSM Shell AkzoNobel</p> <p>Philips Signify Heineken JDE Peet's Unilever SBM Offshore RELX KPN</p>



Labour conditions - improvements in the past three years

Graph 13: Labour conditions in the supply chain – impacts, strategy and reporting



Sociaal – Werkomstandigheden in de keten

Impact van 3 jaar engagement

Due diligence is
geen vinkje
meer

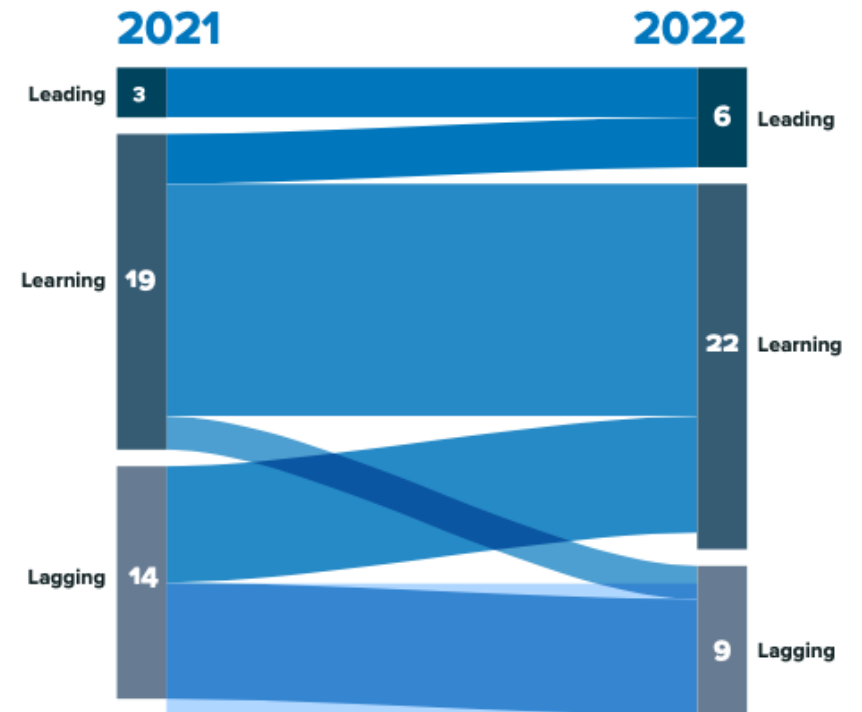
Verder dan
Tier 1

Wetgeving moet
concreter
worden

Governance - Diversity

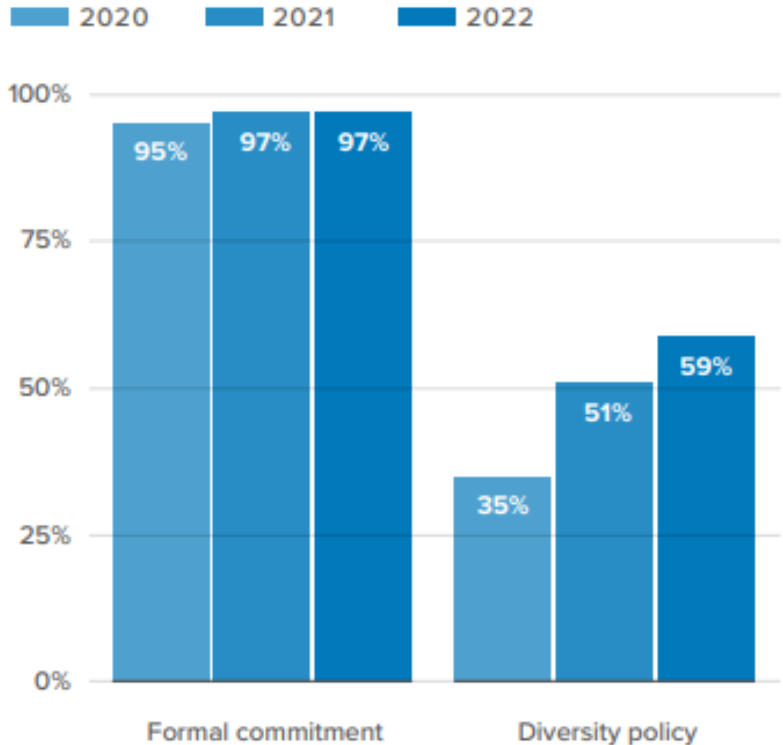


Diversity - impact engagement

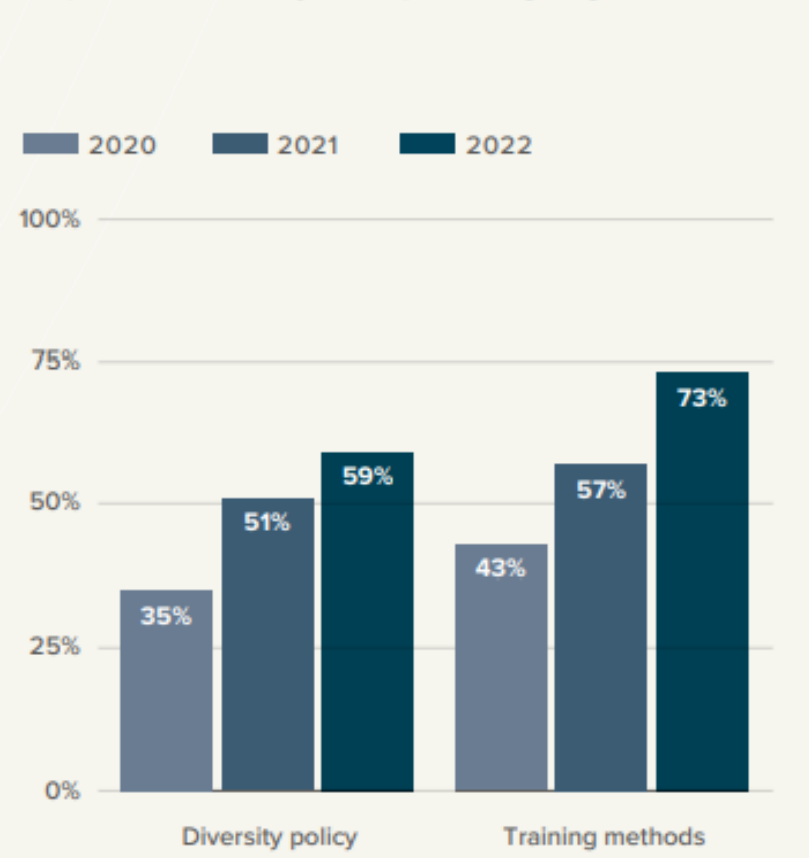


Diversity – three years of engagement

Graph 15: Diversity – formal commitment and policy



Graph 6: Diversity – impact highlights



Governance - Diversiteit

Impact van 3 jaar engagement

We zijn een
diverse
organisatie

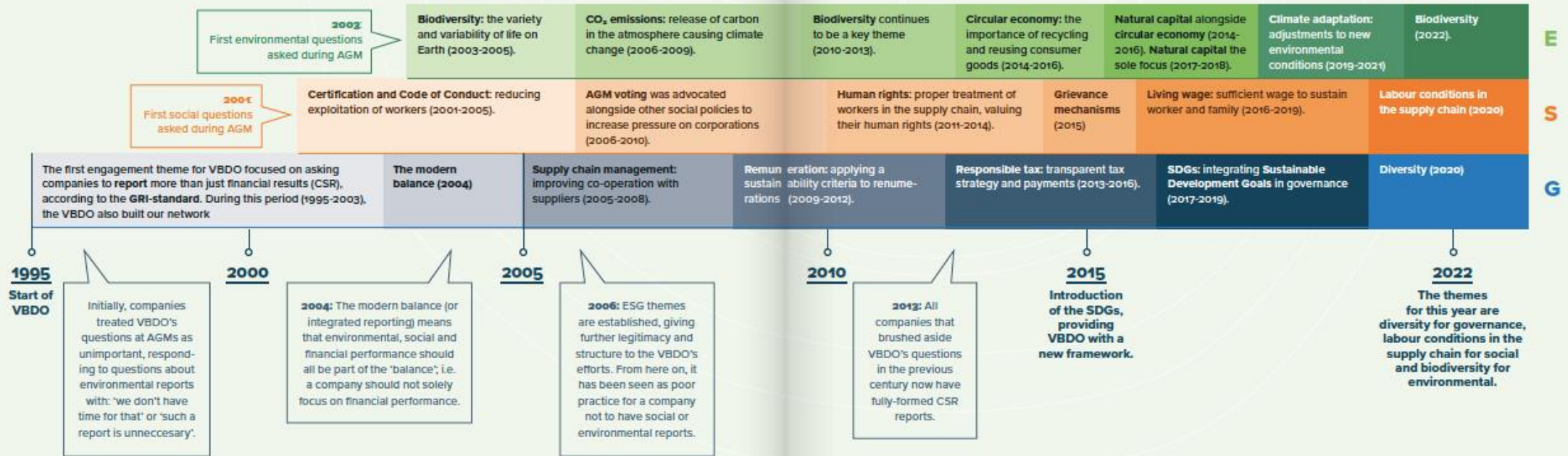
We zijn een
inclusieve
organisatie

Iedereen is
gelijk

27 jaar VBDO engagement

27 years of engagement

Biodiversity refers to the variety of animals, plants, fungi, and microorganisms on Earth.





Leading or lagging?

**Biodiversity &
NL financial sector**

**Coenraad Krijger
Director IUCN NL**

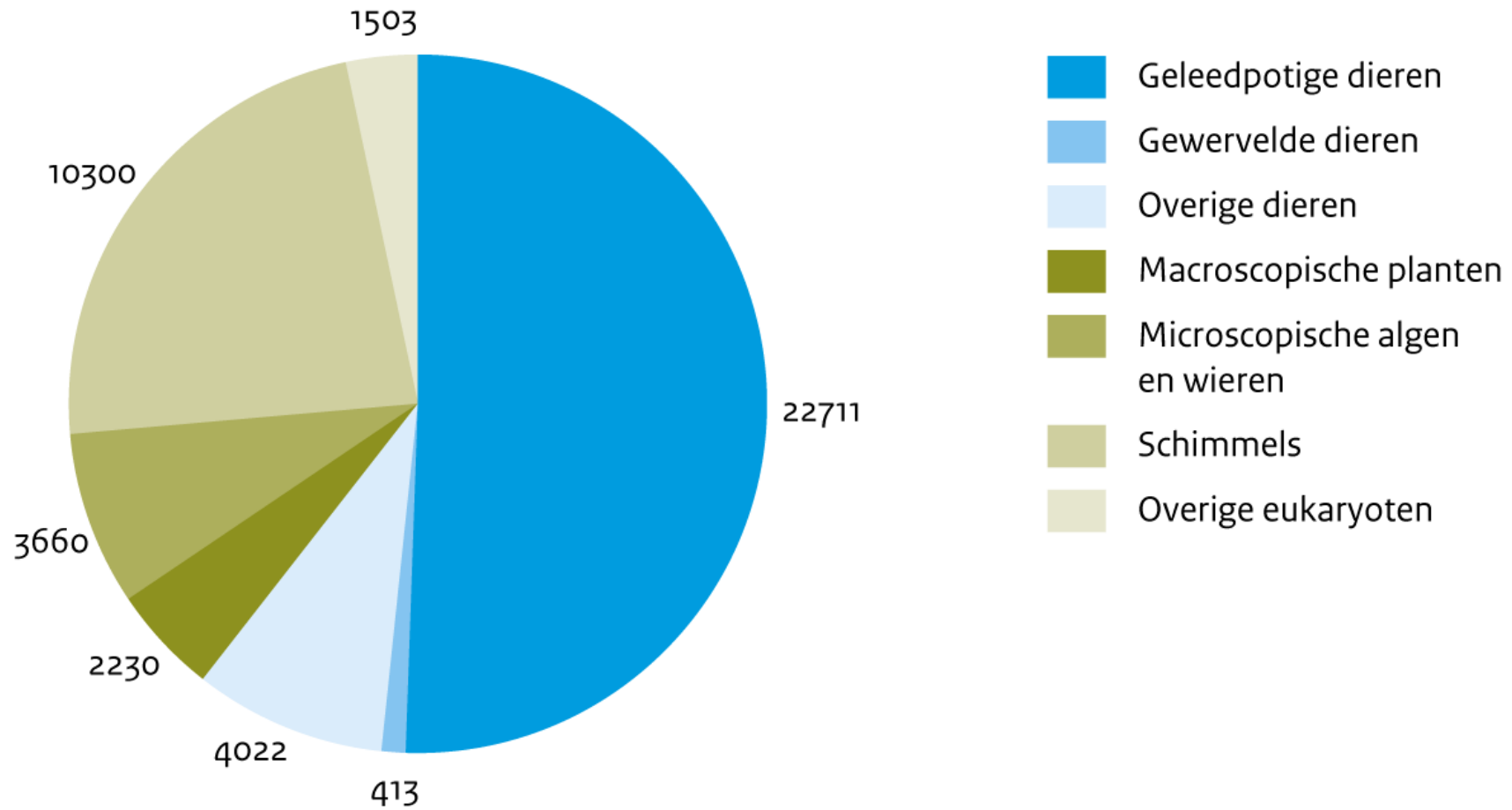
VBDO Platform – BNP Paribas
Amsterdam, 30 juni 2022



- 
- A scenic landscape featuring a dirt path leading through a field of tall grasses and a large tree on the left. The background shows a line of trees and a blue sky with scattered white clouds. The text is overlaid on the right side of the image.
1. What is biodiversity, why important?
 2. What is the issue? How to solve?
 3. Biodiversity and financial sector
 4. Concrete action & examples



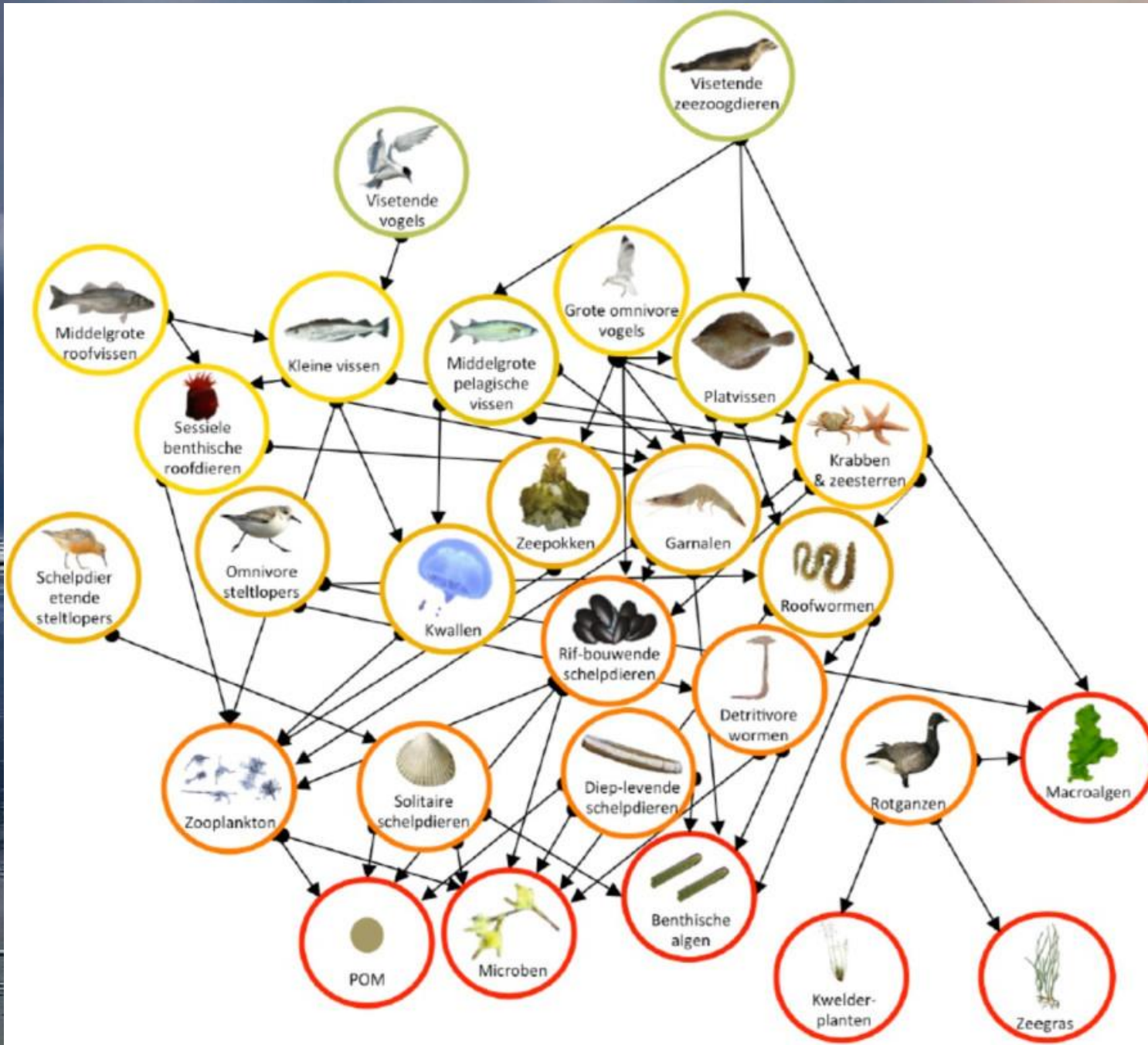
Aantal soorten in Nederland per hoofdgroep, 2018



GENETIC DIVERSITY



FOODWEBS ECOSYSTEMS



Pollination

2 ZERO HUNGER



Healthy soils

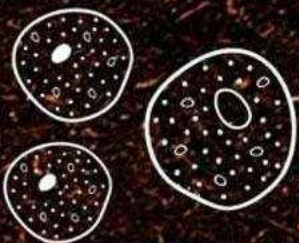
2 ZERO HUNGER



13 CLIMATE ACTION



Bacteria



humus



worms



insects



6 CLEAN WATER
AND SANITATION



Clean water



13 CLIMATE
ACTION



CO₂ storage



Climate buffers

13 CLIMATE ACTION



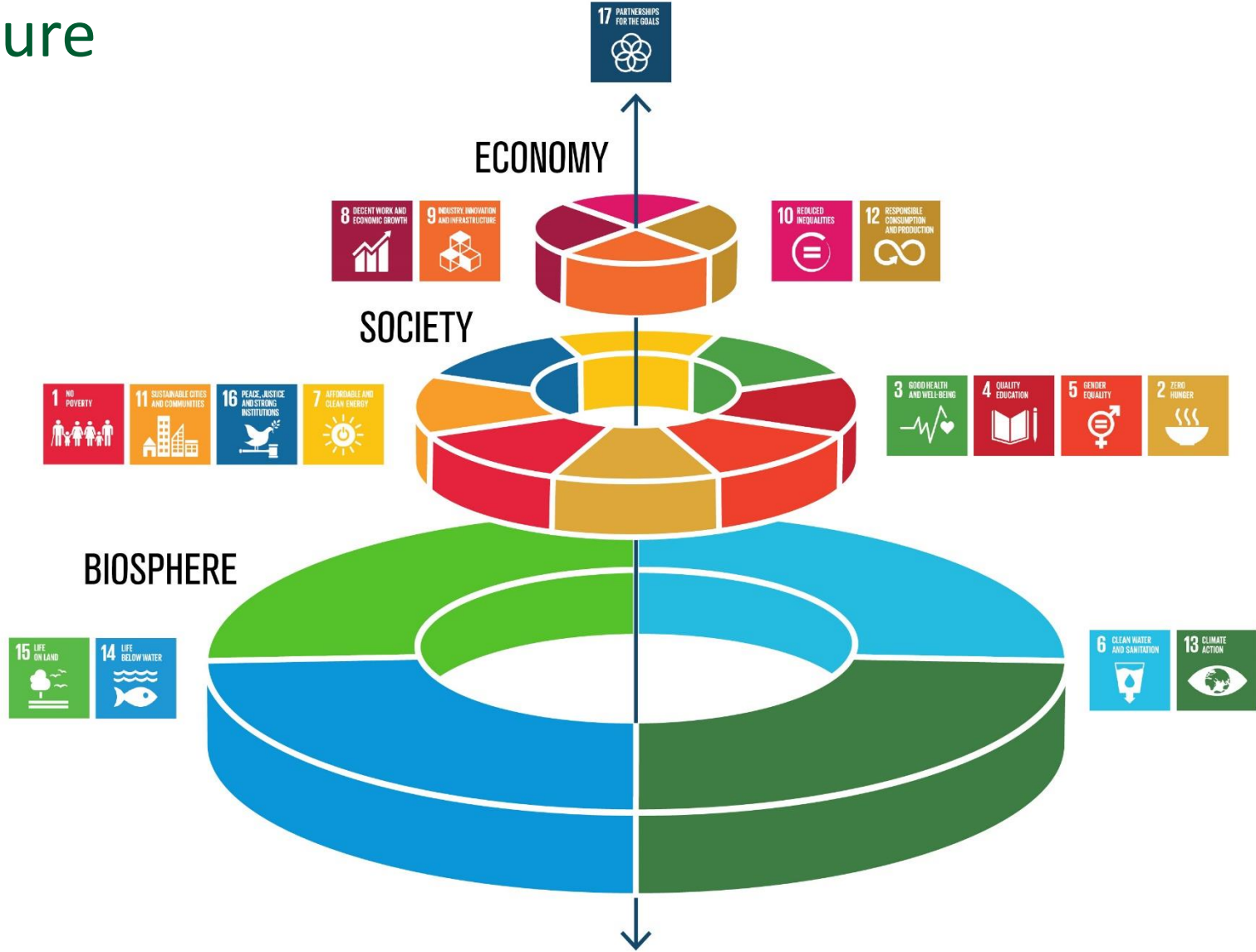
Health & well-being



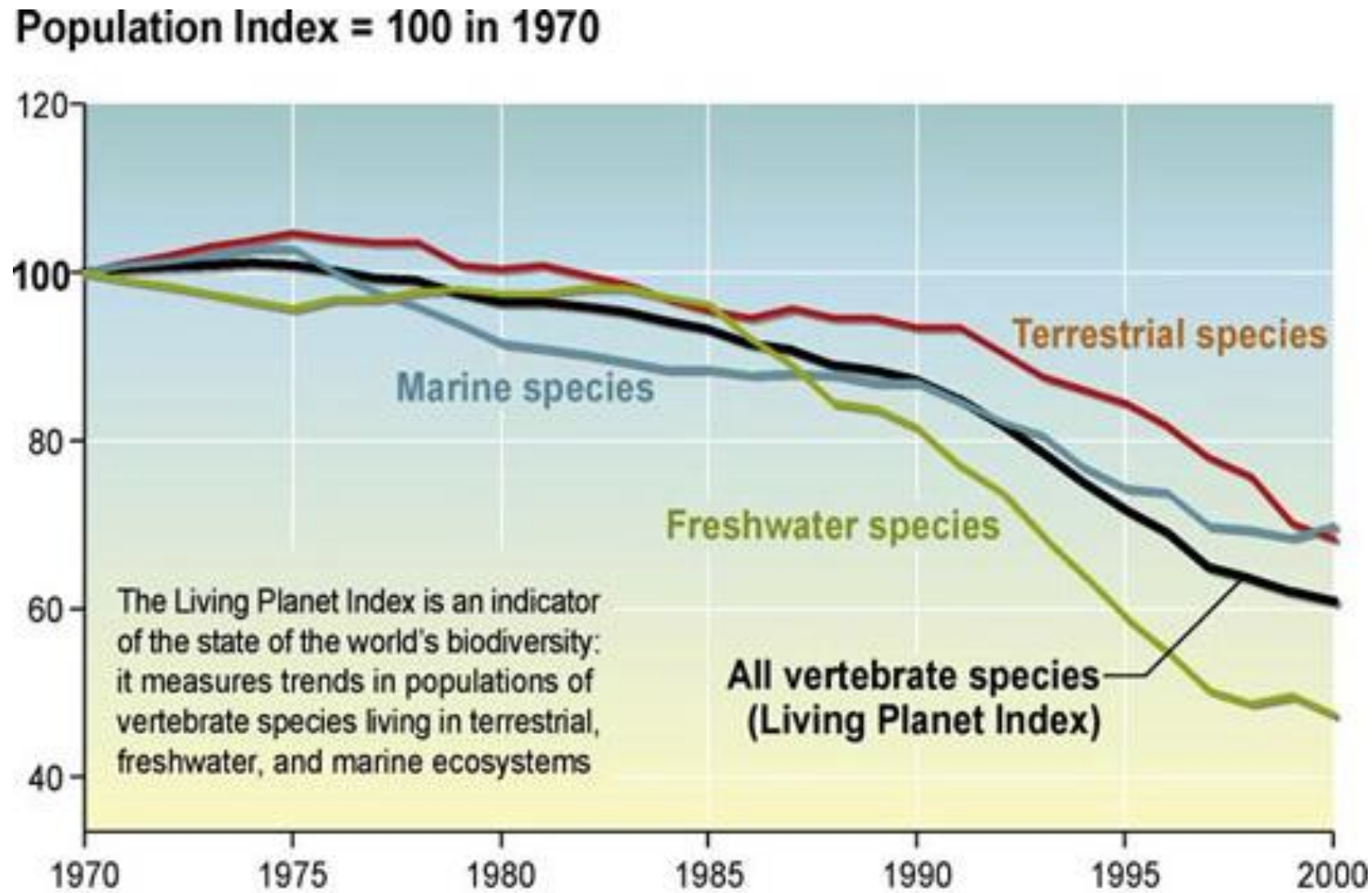
3 GOOD HEALTH AND WELL-BEING

A white graphic on a green background consisting of a jagged line resembling an EKG or heartbeat, ending in a solid heart shape.

Fundamental for sustainable future



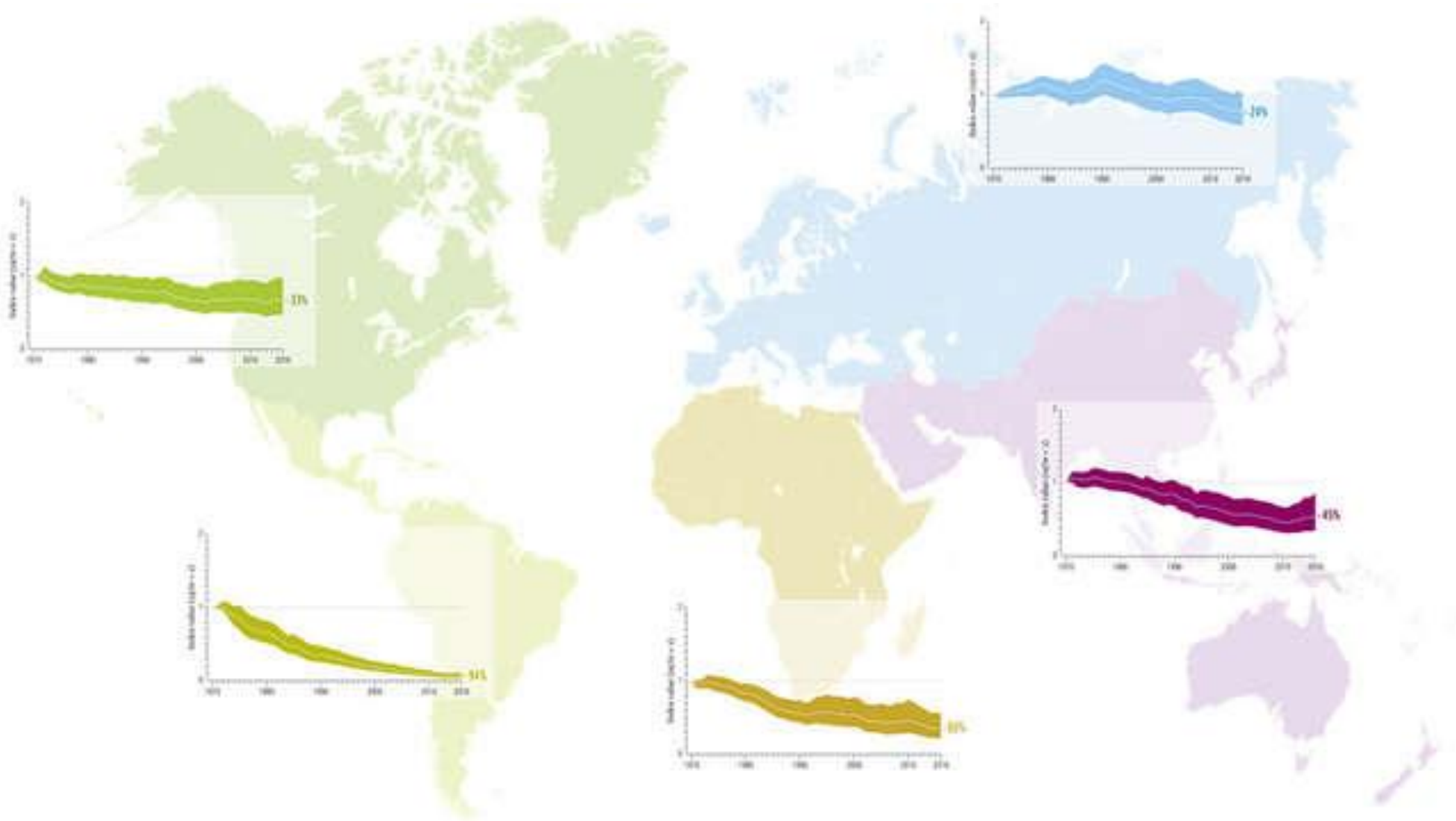
Global biodiversity decline



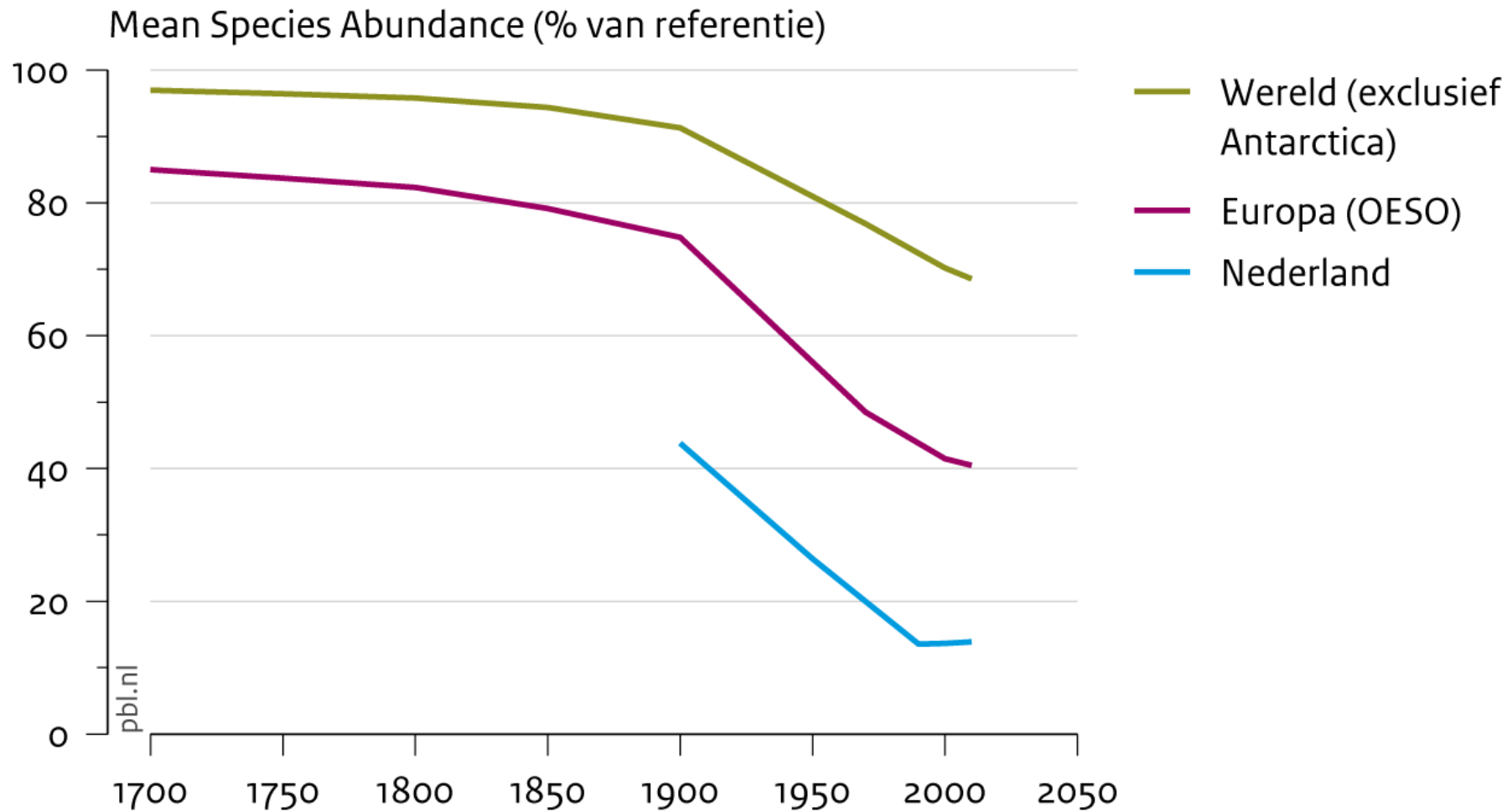
The Living Planet Index is an indicator of the state of the world's biodiversity: it measures trends in populations of vertebrate species living in terrestrial, freshwater, and marine ecosystems

All vertebrate species (Living Planet Index)

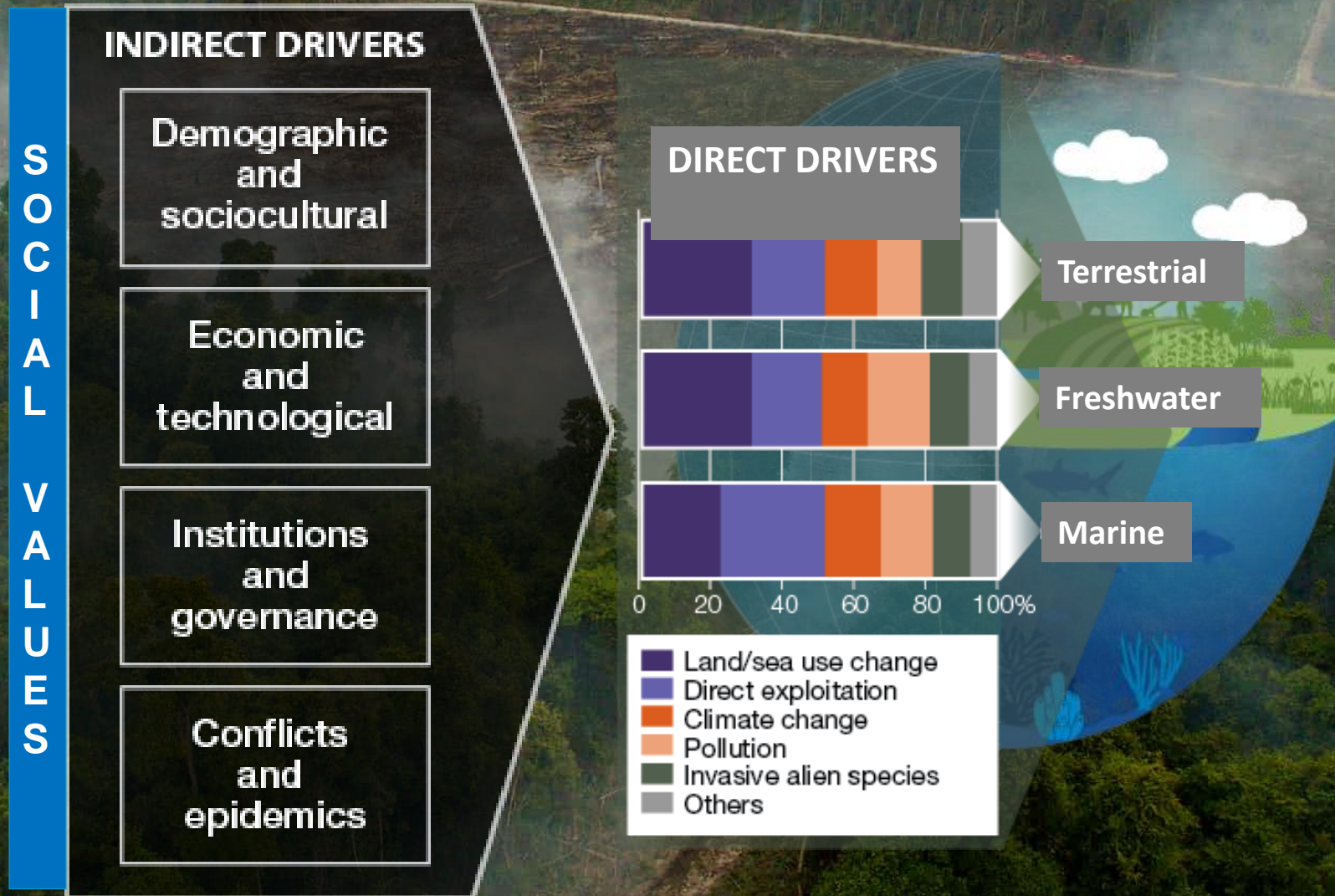
Global biodiversity decline



Biodiversiteit



Root causes biodiversity loss



Loss of habitat

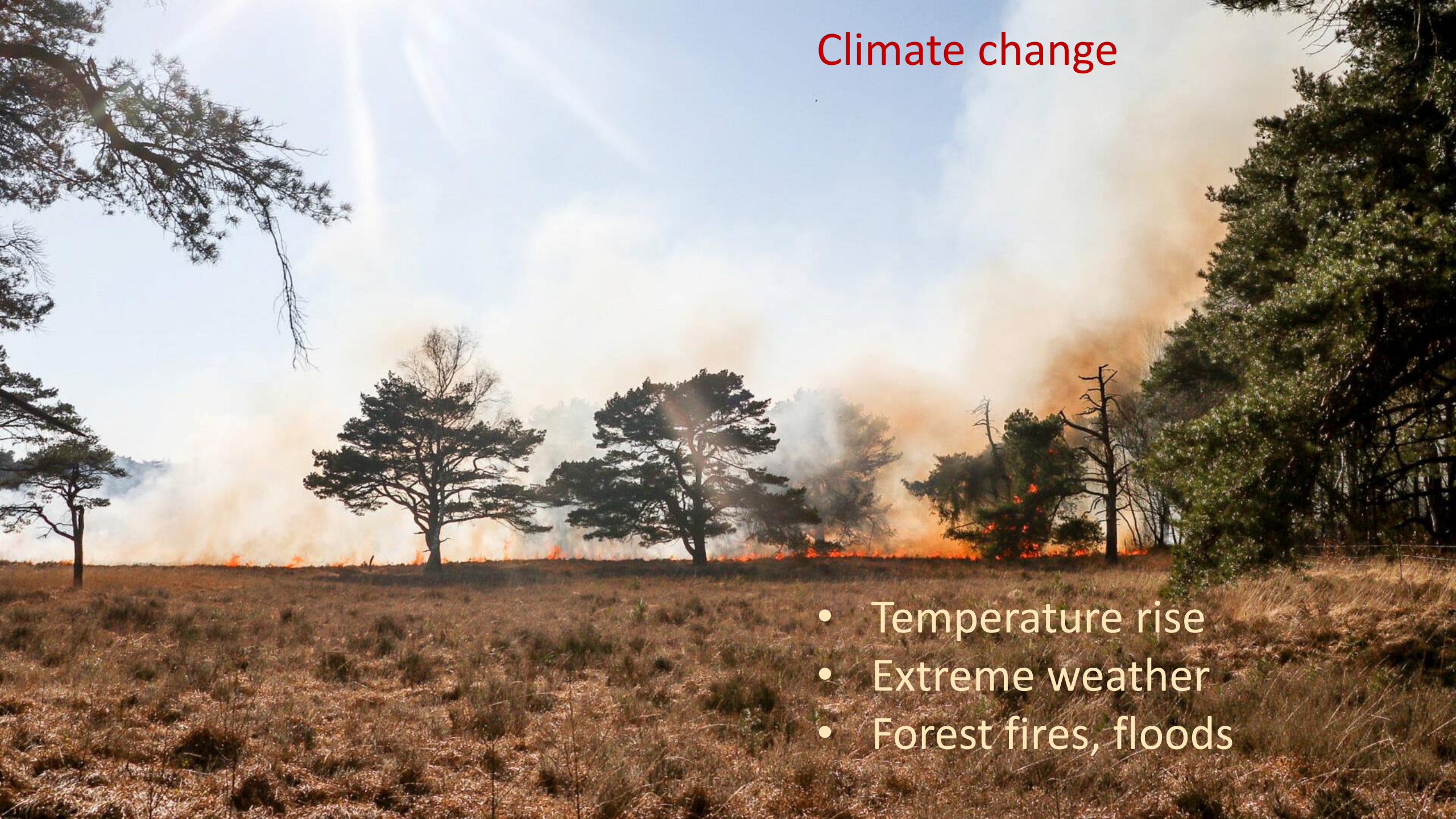
- Industrial agriculture
- Urbanisation
- Extractives
- Infrastructure



- Fisheries
- Hunting
- Pet & plant trade



Climate change



- Temperature rise
- Extreme weather
- Forest fires, floods

Pollution

- Chemicals, poison
- Fertiliser (N, F)
- Pesticides
- Waste, (micro)plastics
- Light & noise

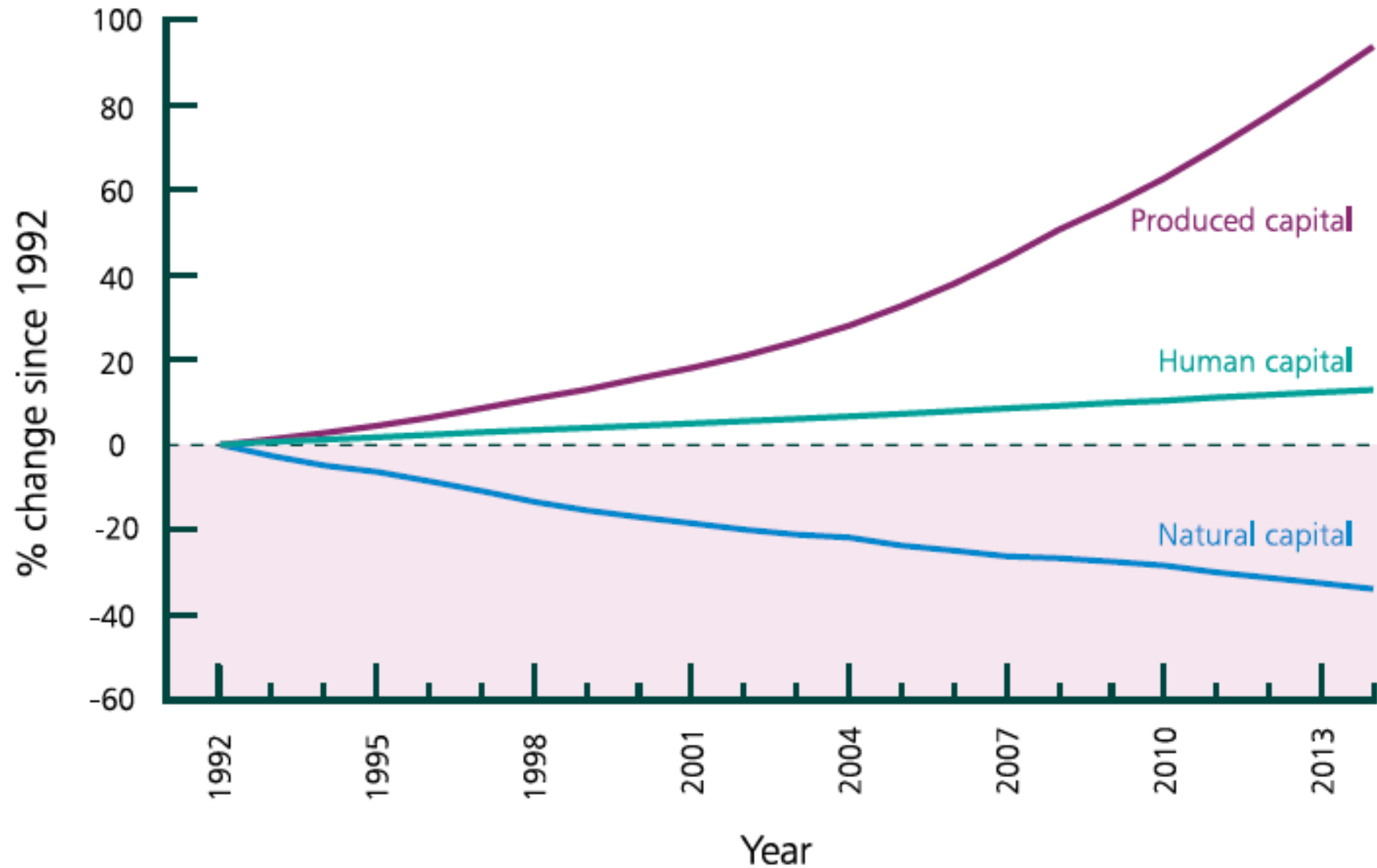




UNSUSTAINABLE
ECONOMIC ACTIVITY



Figure 9 Global Wealth Per Capita, 1992 to 2014



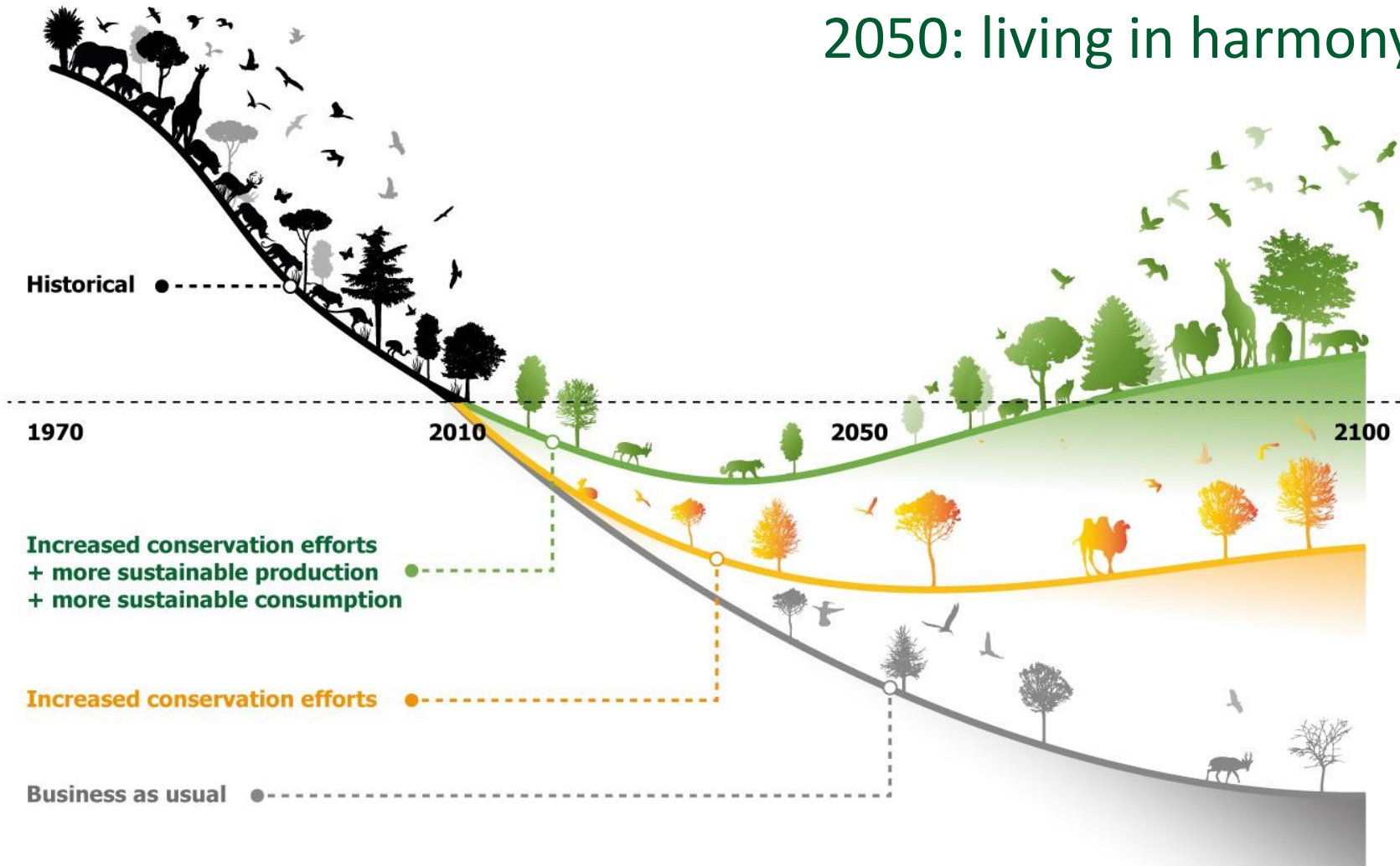
A photograph of a forest with sunlight filtering through the trees, overlaid with a semi-transparent white shape containing the word 'Solutions'.

Solutions

International policy goals

2030: stop biodiversity loss

2050: living in harmony with nature



This artwork illustrates the main findings of the article, but does not intend to accurately represent its results (<https://doi.org/10.1038/s41586-020-2705-y>)



Convention on
Biological Diversity

CBD Global Biodiversity Framework [under negotiation]

- Effective conservation of >30 % planet in 2030
- Reduce pressures & drivers of biodiversity loss
 - elimination of harmful subsidies
 - alignment of investments with biodiversity goals
 - Nature Based Solutions
- Restore degraded ecosystems
 - potential of 3.8 billion ha agricultural land
- Mobilising financial resources
 - > USD 200 Billion per year (public & private)

Figure 1 Relationship between financial sector, economy, biodiversity and ecosystem services

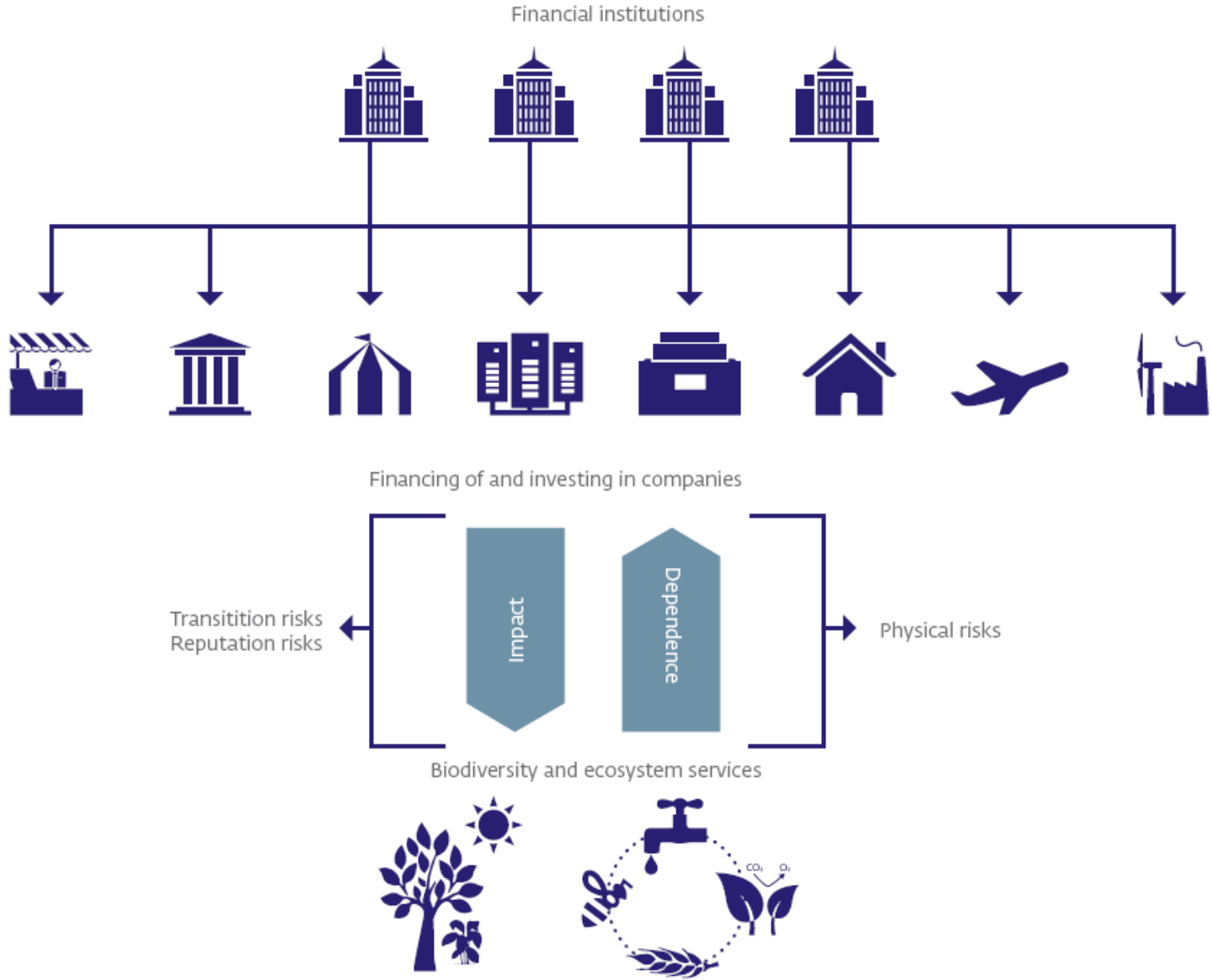
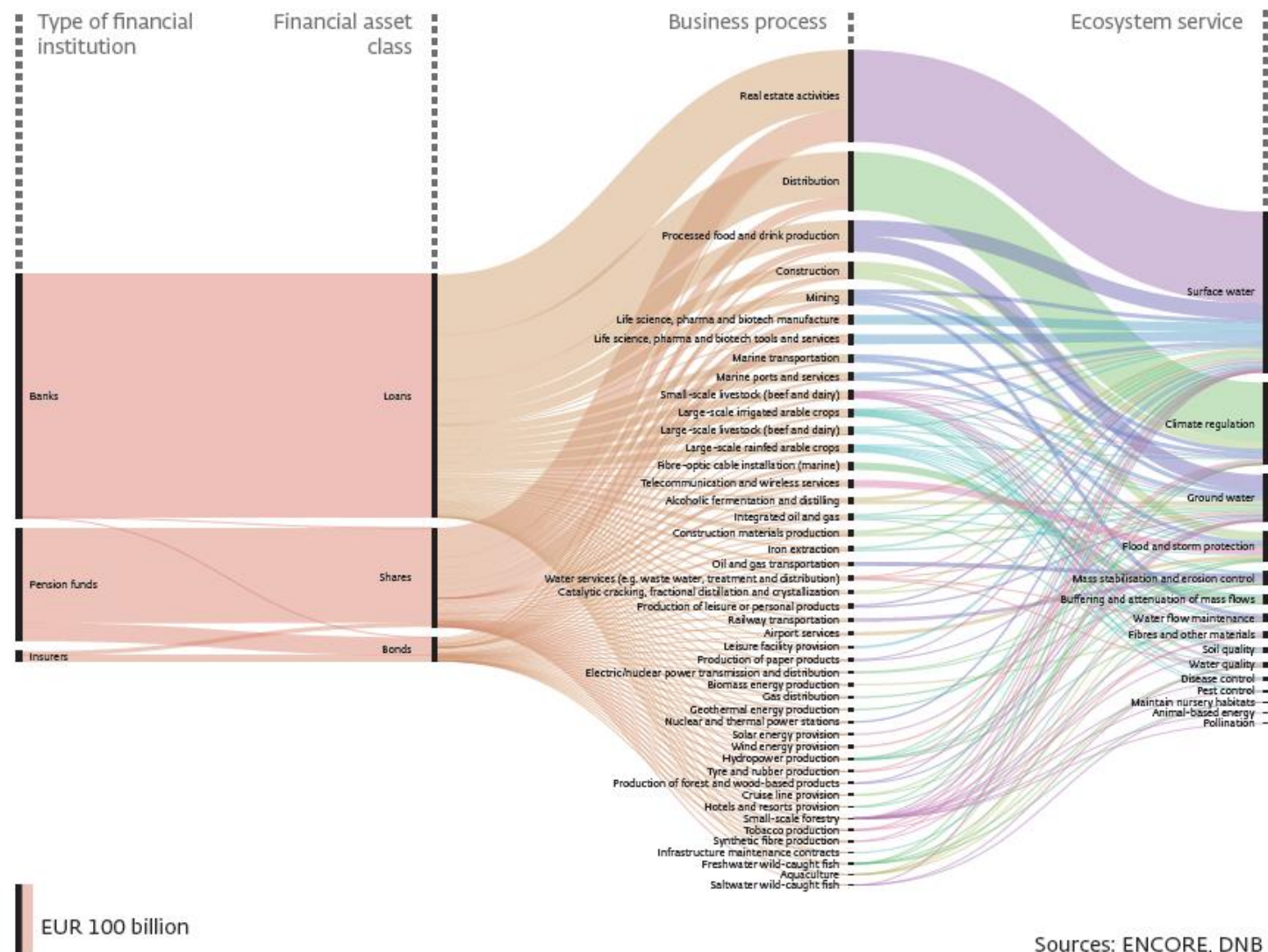


Figure 3 The financial sector and ecosystem services dependencies per euro invested*

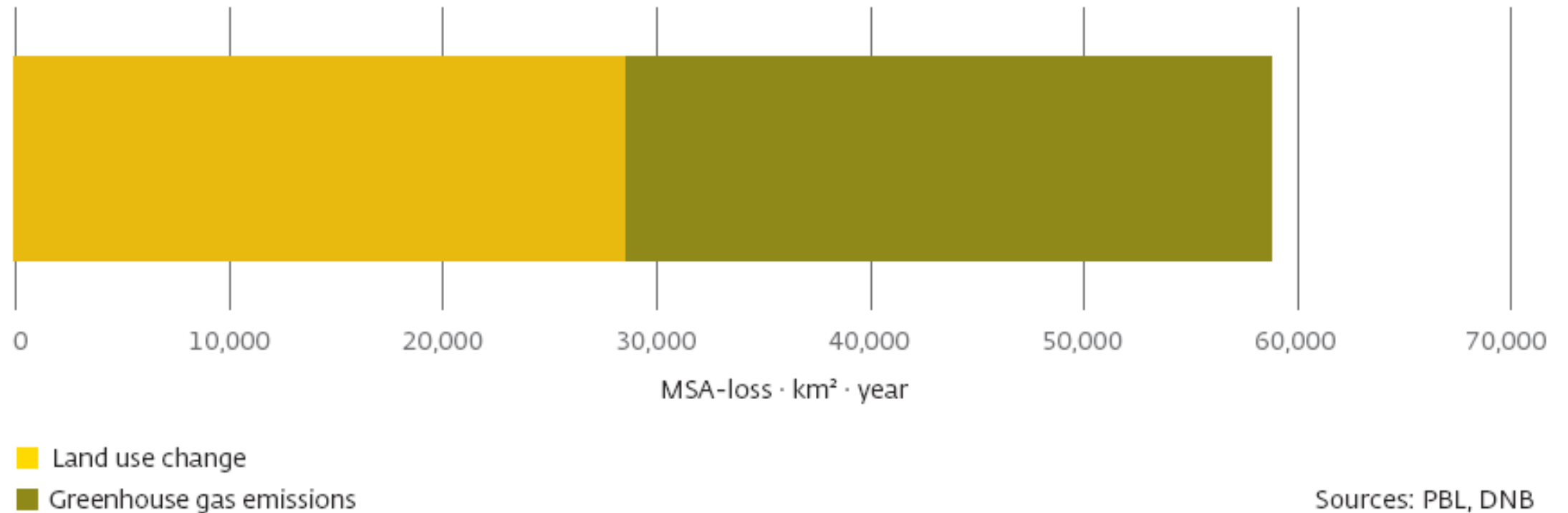
EUR billion



DNB en PBL 2020

* The total value of the holdings in shares and bonds (2018-IV), and of the major loans (2017-IV) by Dutch financial institutions, is EUR 1,421 billion.

Figure 4 Biodiversity footprint of the Dutch financial sector, 2018-IV*



* The shareholdings of Dutch financial institutions for which the sector classification is available total EUR 397 billion. Data available from these companies, including a geographical breakdown of sales, represent EUR 321 billion.

VBDO & IUCN NL (2021) Biodiversity integration in the Dutch financial sector

Progress in integrating biodiversity in strategies & policies

Conclusion: progress made, much more to do



NO REASON TO WAIT

- **Proactive policies requested**
 - ! 1/3 customers prioritise biodiversity
- **Assess relationship with biodiversity (loss)**
 - > Dependencies & risks
 - > Stress test
- **Do no harm**
 - > Re-direct harmful finance & investments
 - ? Avoid stranded assets
- **Do Good**
 - > Green investments: sustainable agriculture, landscape investments, restoration
 - > Investments in green business models
 - > Support business case development



TNFD releases first beta version of nature-related risk management & disclosure framework for market consultation



Taskforce on Nature-related
Financial Disclosures

MOBILISING MORE 4 CLIMATE

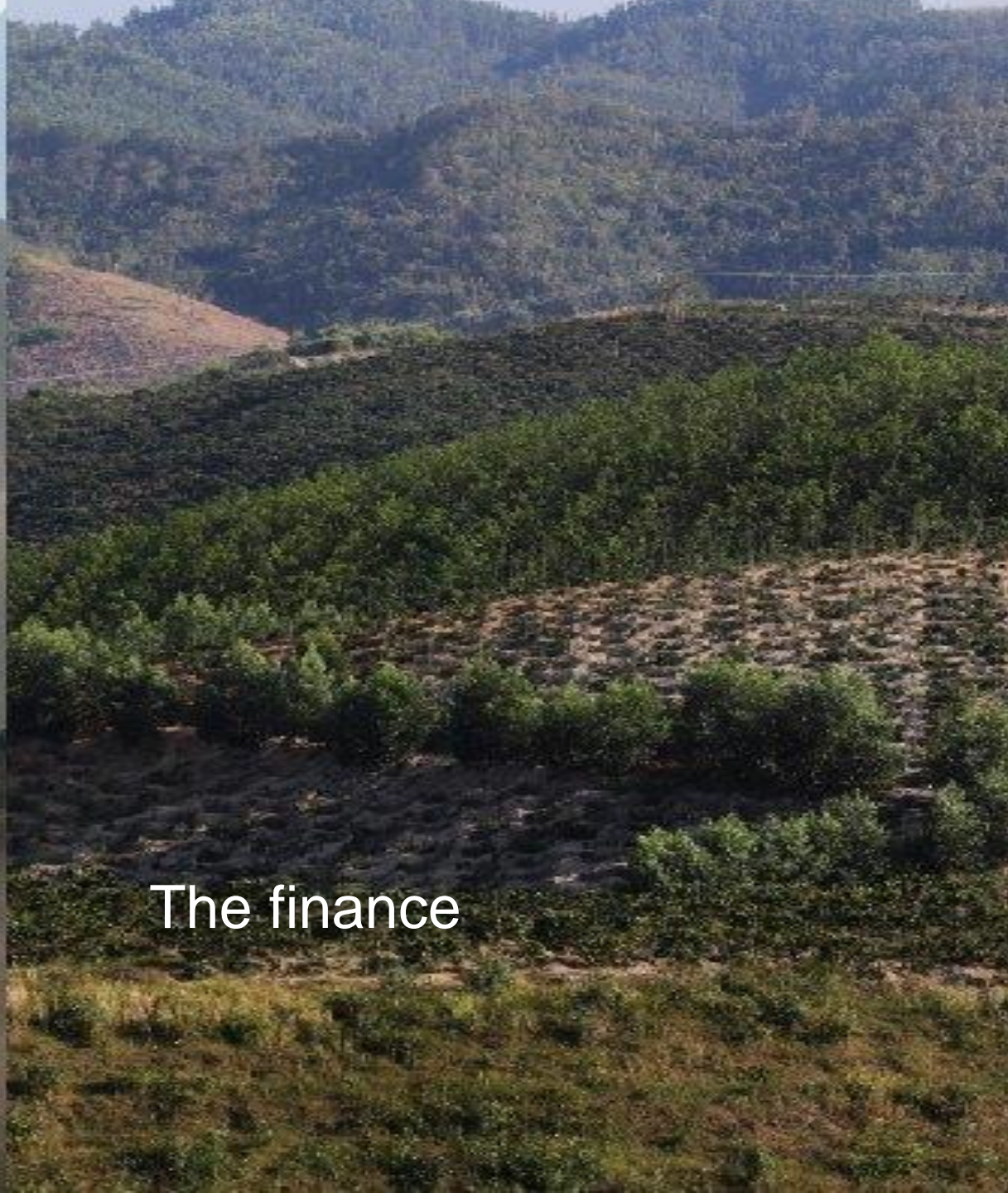
IUCN NL, WWF NL en Tropenbos International



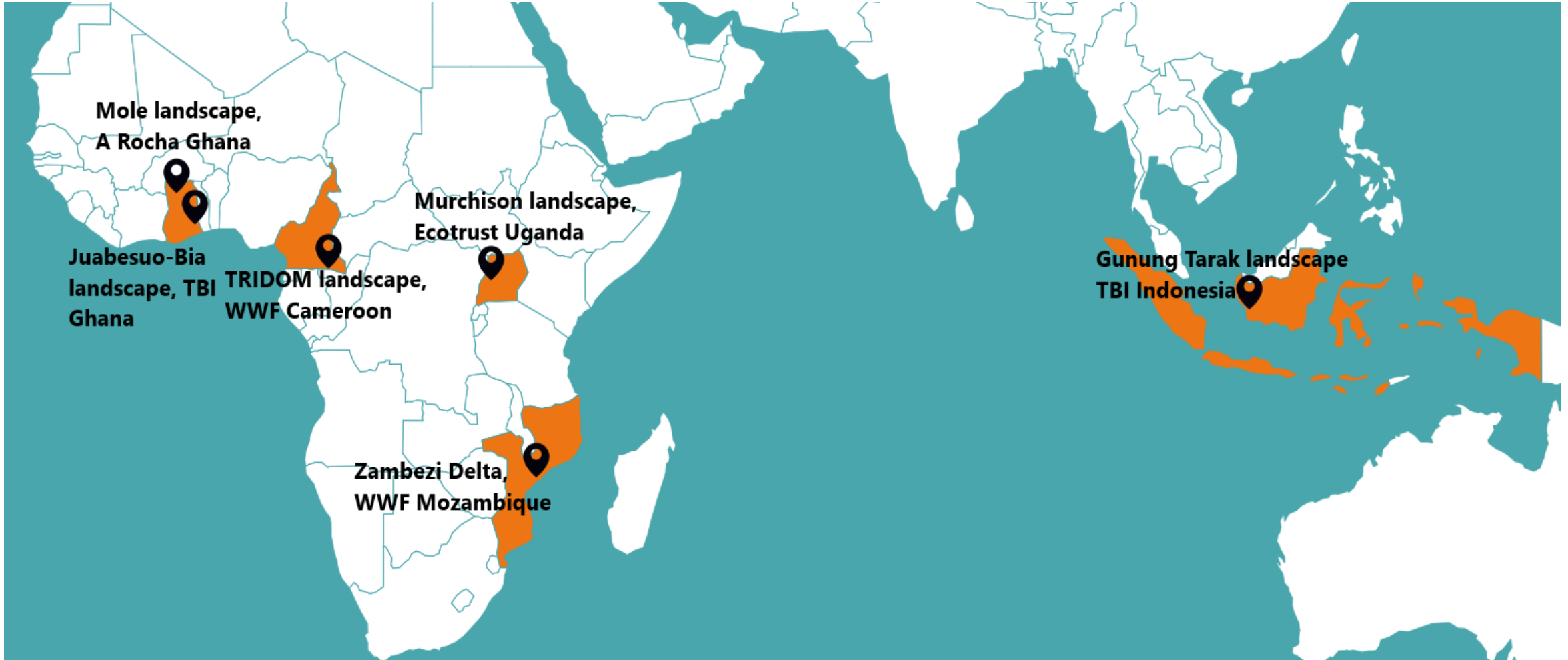
A just world that values and conserves nature.



Climate and nature
challenge



The finance





ONDER HET MAAIVELD

NAAR EEN LEVENDE BODEM ALS BASIS ONDER ONS BESTAAN



onder het maaiveld.

- werkt aan een structurele verandering in de omgang met de bodem.
- promoot een transitie naar een andere relatie met onze bodem; een relatie waarin **bodembiodiversiteit** en **bodemgezondheid** centraal staan in de inrichting en het beheer van het landschap.

Speerpunten

1. **Maatschappelijke en economische waarde**
 - Label voor de bodem
2. **Kennis versterken en uitwisselen**
 - IJkcentrum voor de Bodem in Lelystad
3. **Bewustzijn vergroten**
 - ✓ Documentaire EMS Films, Bodemgezant, Bodemdierendagen, campagnes & events



Mogelijk gemaakt door



Biodiversity

WE ARE ALL IN THIS TOGETHER

www.iucn.nl / www.iucn.org

coenraad.krijger@iucn.nl

06 57769454

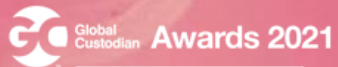




STRATEGIC PARTNER

The Open ESG Platform

June 2022



Best Innovation
in ESG Data and Analytics



INVESTMENT EXCELLENCE AWARDS
ESG CUSTODIAN OF THE YEAR 2021



SHORTLISTED
ESG INITIATIVE 2021



SHORTLISTED AS
BEST ESG INITIATIVE



Who we are



A 100% subsidiary of BNP Paribas Securities services



Audited by BNPP IT security



Funded in 2019, live since early 2020



A team of 25+ financial experts and digital natives

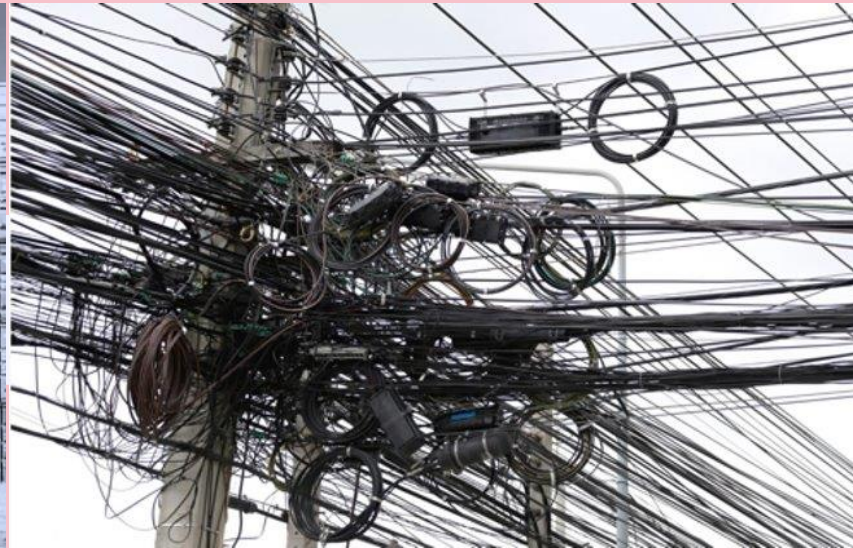
Market hurdles

Transparency



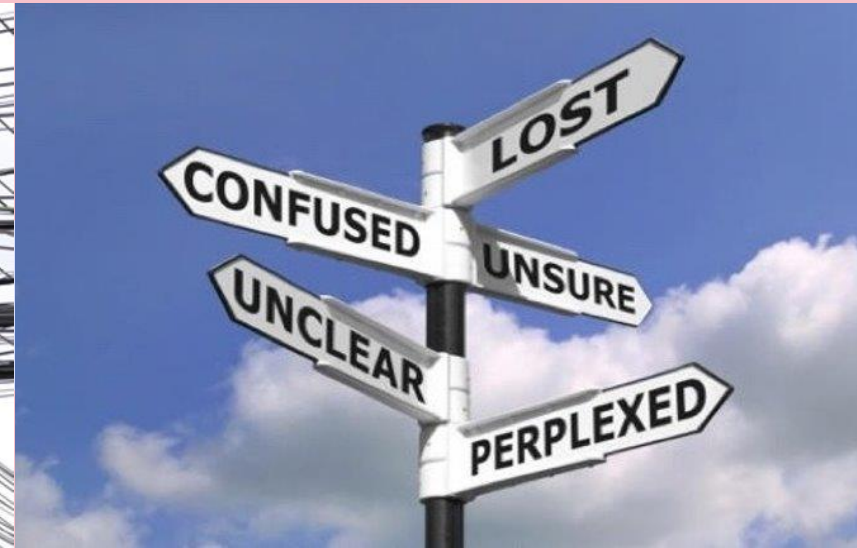
- Poor data quality
- Confidentiality issues
- Look-through impossible

Connectivity



- Fragmented supply chain
- Manual handling
- Data breaches

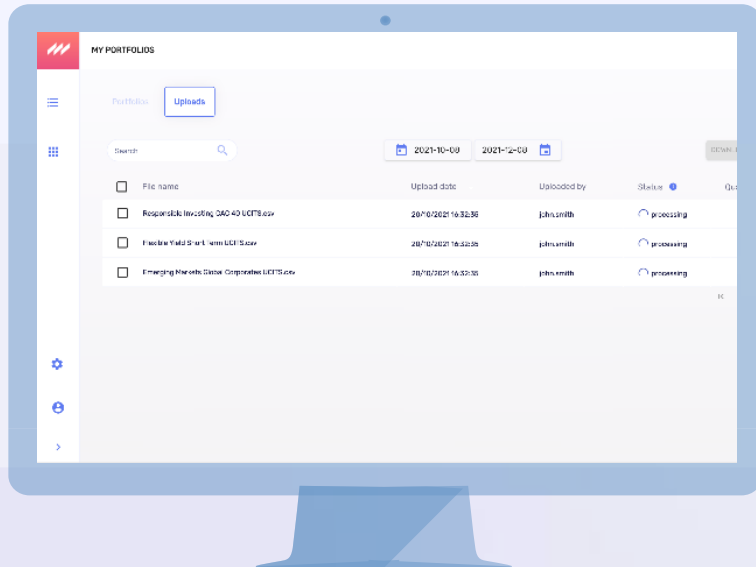
Uncertainty



- Taxonomy + regulations
- Client demand
- Which ESG experts?

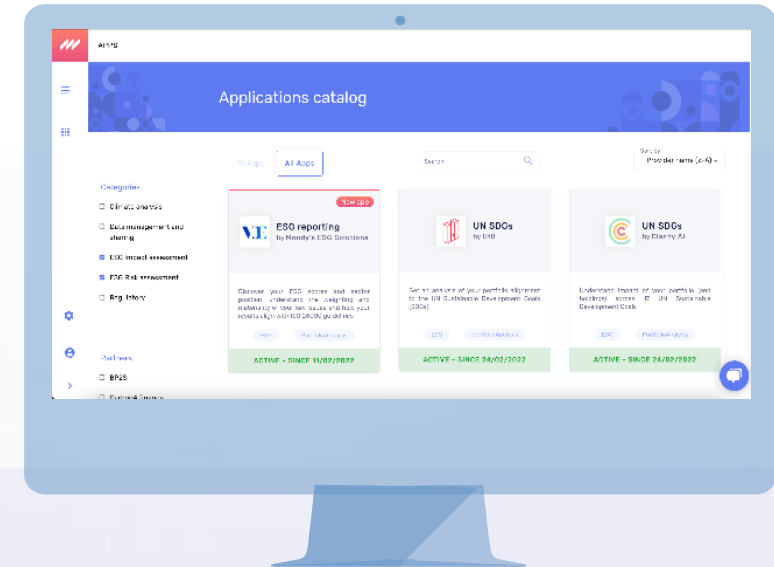
1 Portfolio data exchange interface

- Ecosystem inventory exchange
- Portfolio look-through feature
- Improved data quality and security



2 'Open ESG' marketplace

- Ever-evolving choice of partners
- Platform for testing and scaling
- Multi-level scoring capabilities



'Open ESG' marketplace

Multi-level scoring options

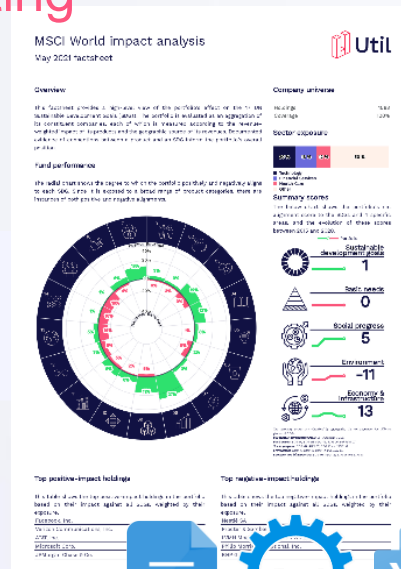


20+ apps and counting

NEW FEATURE

Portfolio-level ESG reporting

Analyse the sustainability of your portfolios, at aggregated and detailed level, thanks to templates provided by our partners.



PDF analysis with access to line by line and excel underlying data.

Asset-level ESG enrichment capability

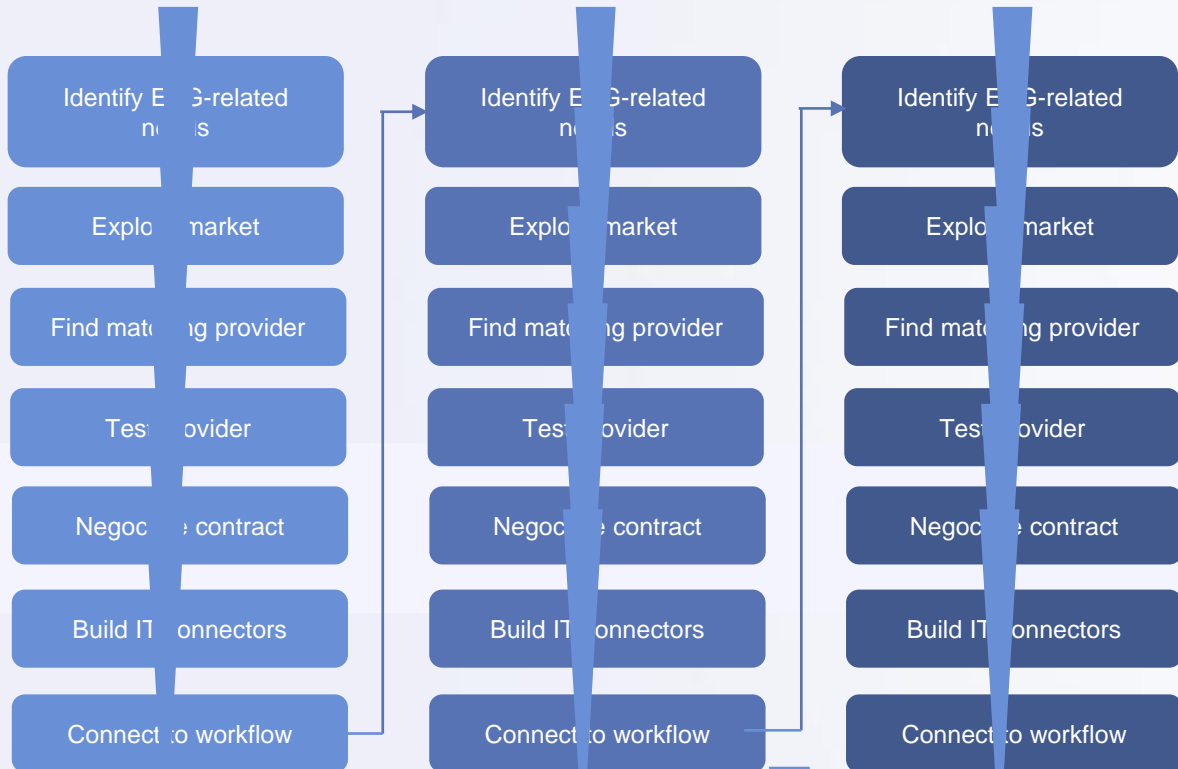
Enrich your portfolios with any ESG data available from providers' datasets on Manaos to fully master aggregation and calculation.



Fully customisable Excel reports downloadable via API, SFTP or manually.
No portfolio-level aggregation, analysis or visualisation.

Going direct

The go-to choice for companies looking to go hands-on through each step of sourcing and selecting an ESG provider, negotiate and sign offline contracts, launch IT projects to plug services together, and do so for as many times as there are providers.



Requires continuous iterations

Lacks cross-provider optimisation

Cost intensive

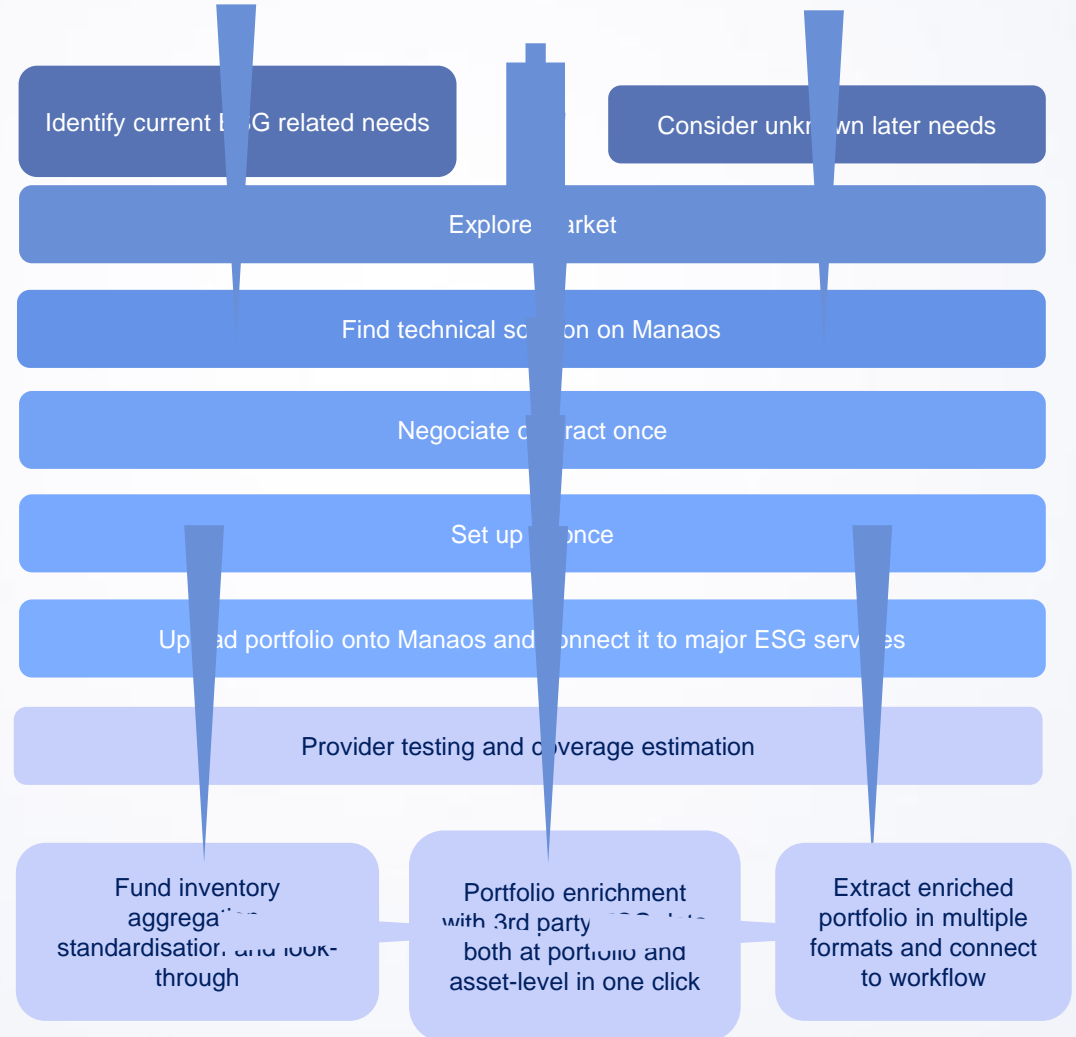
Slow to implement

Not flexible

Not scalable

Choosing Manaos

The go-to choice for any asset managers and asset owners from 1 Million to 1 Trillion \$ AUM, wanting to go from experimentation to full-speed production, faster and cost-efficiently.



Identify current ESG related needs

Consider unknown later needs

Explore market

Find technical solution on Manaos

Negotiate contract once

Set up solution

Upload portfolio onto Manaos and connect it to major ESG services

Provider testing and coverage estimation

Fund inventory aggregation, standardisation, and look-through

Portfolio enrichment with 3rd party ESG data both at portfolio and asset-level in one click

Extract enriched portfolio in multiple formats and connect to workflow



**Hartelijk dank voor uw aandacht,
we spreken graag verder tijdens
de borrel.**

